

NCC COMPLIANT AS5216 CONFORMING

SCREW ANCHOR ROD HANGER

Range 6mm

Zinc Coated
Dry, internal applications

FEATURES & BENEFITS

- Ideal for light duty safety critical & fire rated applications.
- Intended working life of 50 years.
- High tensile single piece anchor, cuts thread into concrete.
- ETA rating - Seismic C1.
- Fire rating to 120 minutes.
- Ideal for close to edge & close anchor spacing applications

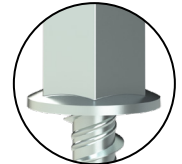
APPLICATIONS/TRADES

- HVAC Duct work.
- Fire protection.
- Cable tray applications.

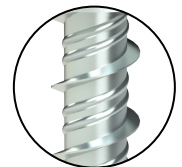
COMPLIANCE



AS5216



Versatile M8 & M10
Internal Thread



Triple Hi-Lo thread
for improved tensile
performance



Tapered tip for simpler
installation



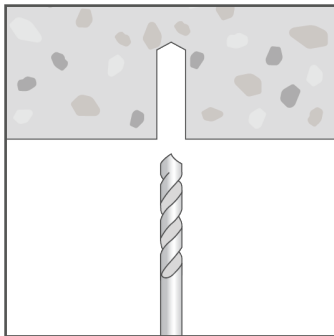
SCREW ANCHOR ROD HANGER

NCC COMPLIANT | AS5216 CONFORMING

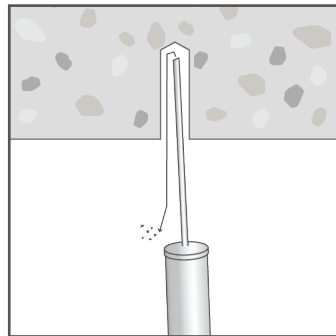
RANGE

Product Code	Pack Qty	ETA Cert'n level	Anchor length (mm)	Drill hole Ø (mm)	Drill hole depth (mm)	Minimum concrete thickness (mm)	Internal thread size
			l_t	d_o	h_1	h_{min}	
ASIMZ06055ETA	50	C1	55	6	65	100	M8 / M10

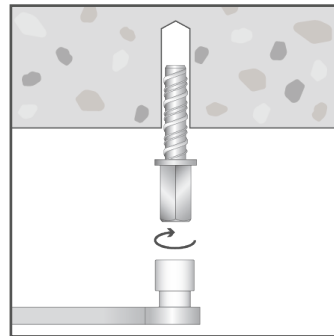
INSTALLATION



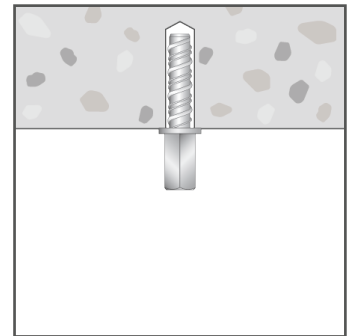
Drill hole into substrate to the specified diameter and depth.



Clear hole of drilling debris.



Insert anchor into hole and screw in using spanner, socket or an impact wrench. Apply constant forward pressure when driving and tighten to the specified torque.



Use hand tools when removing the anchor. Do not remove with power tools if resetting the anchor.

SCREW ANCHOR ROD HANGER

NCC COMPLIANT | AS5216 CONFORMING

PRODUCT INSTALL & PERFORMANCE INFORMATION

Product Code	Anchor length (mm)	Internal thread size	Drill hole depth (mm)	Minimum concrete thickness (mm)	Socket size AF (mm)	Installation torque (Nm)	Design Capacities	
							Uncracked concrete - tension (kN)	Uncracked concrete - shear (kN)
							I_t	h_1
ASIMZ06055ETA	55	M8 / M10	65	100	17	15	6.1	6.0

Note: Concrete cylinder compressive strength = 32MPa.
 Single anchor capacity - no nearby edge, minimum recommended concrete thickness.
 For combined load cases (tension & shear) - must also comply with $(N^* / N_{Rd}) + (V^* / V_{Rd}) \leq 1.2$.

Important Disclaimer: Product performance information contained herein is based on ETA certificate data and AS5216:2021 inputs as appropriate. Capacity information is limited to very simple load case configurations and is provided to enable a relative comparison within and across product ranges. The design of an anchoring solution for a particular application should be conducted by an appropriately qualified design professional.