

PRODUCT BULLETIN

NEW PRODUCT
 EXISTING PRODUCT UPGRADE

B8 Gutter Bolt Range

NEW SNAP PACK RANGE OF B8 METRIC GUTTER BOLTS & GALVANISED ACCESSORIES

ESTIMATED TIME OF ARRIVAL: AVAILABLE NOW!

For use in outdoor applications.

MARKETING/PROMOTIONAL STRATEGY

- Order the range and get 20% OFF!
- Cut into existing range of gutter bolts with 4 new hookbanks
- Data strips available soon

KEY FEATURES AND BENEFITS

- Metric now available! B8 packaging has a yellow streak through it to help differentiate the product - this has been done on the data strips to match
- B8 & GAL for external use
- Updated packaging that stands out



B8 MUSHROOM HEAD BOLT & NUT

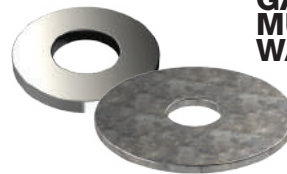
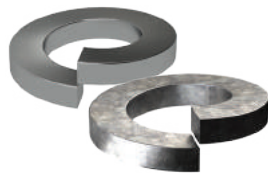


B8 & GAL SPRING WASHERS

B8 FLAT WASHERS

GAL MUDGUARD WASHERS

SS304 SPLIT PINS



GAL WING NUTS

GAL FLANGE SERRATED NUTS



AUSTRALIA

88 Dalmeny Avenue, Rosebery NSW 2018
 02 8332 1500

NEW ZEALAND

Unit F, 373 Neilson Street, Penrose, Auckland
 Toll Free: 0800 658 075

PRODUCT BULLETIN

NEW PRODUCT
 EXISTING PRODUCT UPGRADE

B8 Gutter Bolt Range Listing

*Inner EANs, min order quantity of 1 outer = 5 snap packs

| PRODUCT CODE | BARCODE | DESCRIPTION | PK QTY |
|--------------|----------------------|------------------------------------|--------|
| BMCM8050123 | 9337357390197 | MUSH B/N SL/PH B8 M5 X 12 - SNAP | 25 |
| BMCM8050153 | <u>9337357390227</u> | MUSH B/N SL/PH B8 M5 X 15 - SNAP | 25 |
| BMCM8050203 | 9337357390258 | MUSH B/N SL/PH B8 M5 X 20 - SNAP | 22 |
| BMCM8060153 | <u>9337357390289</u> | MUSH B/N SL/PH B8 M6 X 15 - SNAP | 15 |
| BMCM8060203 | 9337357390319 | MUSH B/N SL/PH B8 M6 X 20 - SNAP | 14 |
| BMCM8060253 | <u>9337357390340</u> | MUSH B/N SL/PH B8 M6 X 25 - SNAP | 12 |
| BMCM8060303 | 9337357390371 | MUSH B/N SL/PH B8 M6 X 30 - SNAP | 10 |
| BMCM8060403 | <u>9337357390401</u> | MUSH B/N SL/PH B8 M6 X 40 - SNAP | 10 |
| BMCM8060503 | 9337357390432 | MUSH B/N SL/PH B8 M6 X 50 - SNAP | 10 |
| BMCM8060603 | <u>9337357390463</u> | MUSH B/N SL/PH B8 M6 X 60 - SNAP | 8 |
| BMCM8060753 | 9337357390494 | MUSH B/N SL/PH B8 M6 X 75 - SNAP | 6 |
| WSPM80500P4 | <u>9337357390517</u> | SPRING WASHER B8 M5 - SNAP | 65 |
| WSPM80600P4 | 9337357390555 | SPRING WASHER B8 M6 - SNAP | 55 |
| WSPMG0800P4 | <u>9337357299230</u> | SPRING WASHER GAL M8 - SNAP | 40 |
| WSPMG1000P4 | 9337357299247 | SPRING WASHER GAL M10 - SNAP | 30 |
| WSPMG1200P4 | <u>9337357299254</u> | SPRING WASHER GAL M12 - SNAP | 15 |
| WFRM80500P4 | 9337357390586 | FLAT WASHER B8 M5 - SNAP | 35 |
| WFRM80600P4 | <u>9337357390616</u> | FLAT WASHER B8 M6 - SNAP | 30 |
| WMGMG0600P4 | 9337357299261 | MUDGUARD WASHER GAL M6 - SNAP | 12 |
| WMGMG0800P4 | <u>9337357299278</u> | MUDGUARD WASHER GAL M8 - SNAP | 10 |
| WMGMG1000P4 | 9337357299285 | MUDGUARD WASHER GAL M10 - SNAP | 10 |
| WMGMG1200P4 | <u>9337357299292</u> | MUDGUARD WASHER GAL M12 - SNAP | 8 |
| NWIMG0800P4 | 9337357299155 | WING NUT GAL M8 - SNAP | 4 |
| NWIMG1000P4 | <u>9337357299162</u> | WING NUT GAL M10 - SNAP | 3 |
| NWIMG1200P4 | 9337357299179 | WING NUT GAL M12 - SNAP | 2 |
| NFSMG0800P4 | <u>9337357390647</u> | FLANGE SERRATED NUT GAL M8 - SNAP | 10 |
| NFSMG1000P4 | 9337357390678 | FLANGE SERRATED NUT GAL M10 - SNAP | 6 |
| NFSMG1200P4 | <u>9337357390708</u> | FLANGE SERRATED NUT GAL M12 - SNAP | 4 |
| PSPM4250324 | 9337357390722 | SS304 SPLIT PIN 2.5 X 32MM - SNAP | 25 |
| PSPM4320404 | <u>9337357390760</u> | SS304 SPLIT PIN 3.2 X 40MM - SNAP | 20 |
| PSPM4360454 | 9337357390791 | SS304 SPLIT PIN 3.6 X 45MM - SNAP | 15 |

GAL NYLOC NUTS ALSO AVAILABLE

AUSTRALIA

88 Dalmeny Avenue, Rosebery NSW 2018
 02 8332 1500

NEW ZEALAND

Unit F, 373 Neilson Street, Penrose, Auckland
 Toll Free: 0800 658 075